

# INITIAL POSITIONING ON FREE THROWS

Illustration below may not be perfectly to scale; intended to illustration explanations

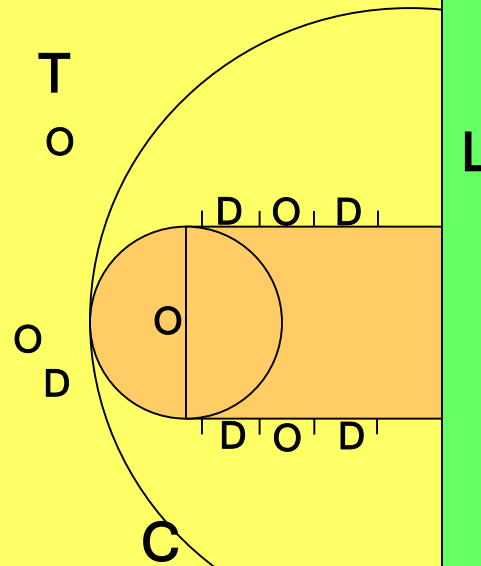
TEAM BENCH



TEAM BENCH

## TRAIL OFFICIAL :

**WHERE** - Tableside, at or just below the 28' mark, inside the sideline enough so as not to be right next to the coach's area, with a wide angle view to observe all players behind the arc  
**NOT** - at halfcourt, or right next to the coach's box



## LEAD OFFICIAL:

**WHERE** - After administering the free throw from a position under the basket, the Lead backs up to stand about three or four feet outside the lane line opposite table and off the endl ine enough to have an unobstructed view of the four players he is primarily responsible for  
**NOT** - in the vacated lower block on the first of multiple free throws

## CENTER OFFICIAL :

**WHERE** - Opposite table, just above the free-throw line extended and halfway between the nearer free-throw lane-line extended and the sideline, positioned to have an unobstructed view of the free thrower and the two lane spaces he is primarily responsible for  
**NOT** - out on the sideline

# FREE THROWS: OFFICIALS' RESPONSIBILITIES

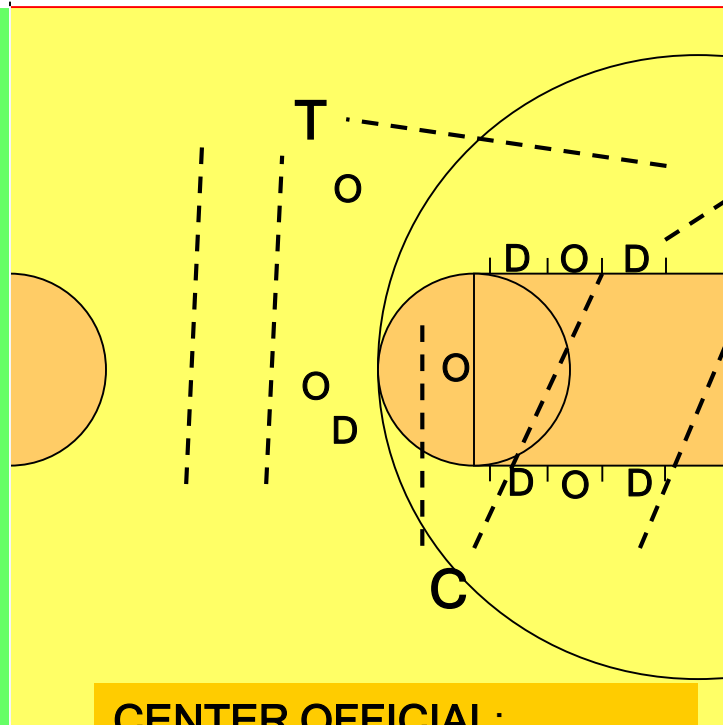
Illustration below may not be perfectly to scale; intended to illustration explanations

TEAM BENCH



TEAM BENCH

**TRAIL OFFICIAL:**  
INITIALLY WATCHES - All players above the arc



**LEAD OFFICIAL:**  
INITIALLY WATCHES - players in the two lower blocks and players in all lane spaces opposite

**CENTER OFFICIAL:**  
INITIALLY WATCHES - free thrower and the players in the upper two lane spaces opposite

ACTUAL POSITIONING of each official prior to the free throw is determined by the unobstructed view each is able to achieve based on their initial positioning

# FREE THROWS: ON THE RELEASE

Illustration below may not be perfectly to scale; intended to illustration explanations

TEAM BENCH



TEAM BENCH

## TRAIL OFFICIAL:

Steps down a step toward the basket ready to assist the Center and Lead with violations, alert to officiate rebounding action

STEP DOWN



O

O  
D

D O D



STEP DOWN

D O D

L

## LEAD OFFICIAL:

Identifies violations by players he's responsible for, focuses low on torsos, arms, hips, and elbows as players contend for the rebound

## CENTER OFFICIAL:

Steps down a step toward the basket, ready to identify violations by players he's responsible for, observe rim/no rim status of shot

**COMMON ERRORS AND UNAPPROVED MECHANICS TO AVOID:** > Lead watching the flight of the ball. > Poor positioning, having to look through players to see assigned players. > Trail and Center "bailing" the other way upon release of the shot. > Lead standing in the empty lower lane space for the first of multiple free throws. > Center near the sideline and Trail toward midcourt, disengaged from any meaningful involvement in the ensuing action.